

HIPON's main goals

- Transfer medical experience in diagnostic practical issues of histopathology
- Provide an innovative and attractive ICT system combining resources, glossary, e-modules and multi-media online games
- Generate multilingual educational product for the area of histopathology in order to be exploited by all educational sectors, either in distant learning process or physical teaching process
- Strengthen European cooperation of the histopathology community via a social media component, the 'histo-book'
- Produce a reliable data bank of real case studies with images and material that is not easy for all European institutes to afford

Why HIPON project

Despite the plurality of sources of information at a theoretical level, there is lack of:

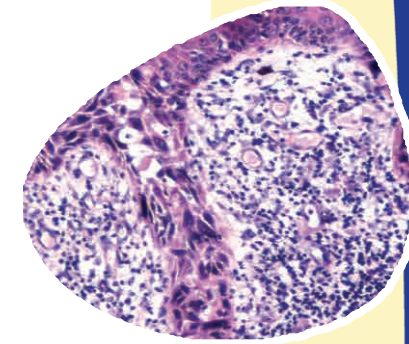
- a reliable learning web platform which will transmit the right way of thinking in Pathology
- a method how to organize the clinicopathologic findings so as to reach safe diagnosis

HIPON e-learning platform reflects professional experience and advances education in Histopathology by employing authentic learning approaches based on real-world problem solving and case studies.

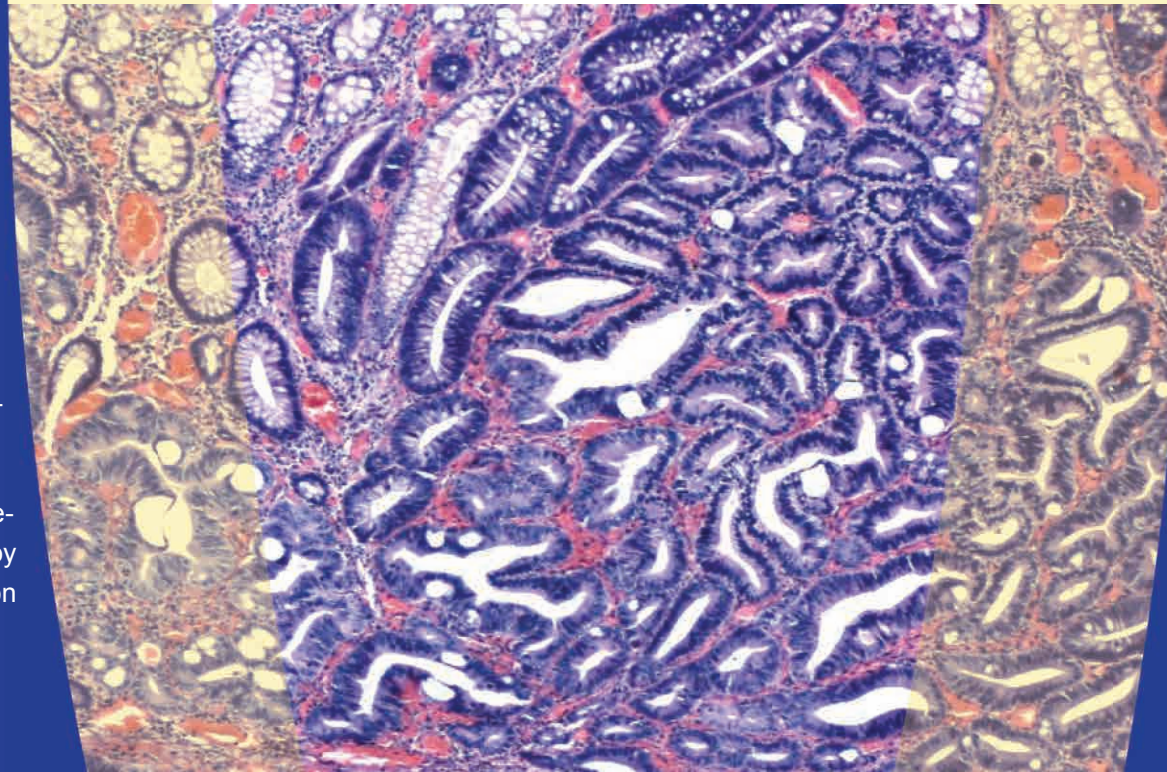
Major features of HIPON platform

Our teaching approach is based on online case studies and interactive discussions, through a well-structured and user-friendly, multi-language, e-learning platform which offers a valuable teaching instrument to acquire professional experience in pathology, taking advantage of modern image technology. The main characteristics of this modern pathology module consist of:

- 1 Guided learning courses reflecting pedagogical experience
- 2 Extended microscope high quality image collections
- 3 Educational videos
- 4 Relevant virtual slides on basic and systemic pathology



makes training a significant on-line experience



INTERACTIVE KNOWLEDGE BANK

HIPON constitutes an interactive knowledge bank on histopathology through an innovative platform for multi-national training & vocational activities.



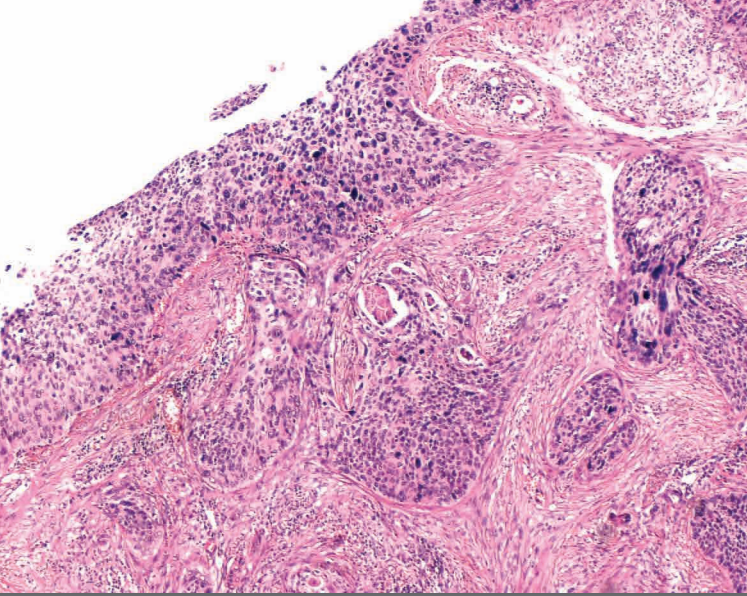
PLATFORM FEATURES

Presents systems & organs of the human body :

- the main normal architecture is highlighted with appropriate brief comments
- basic morphologic patterns of tissue injury are analyzed with multiple case images
- an amount of data narrowing the differential diagnosis follows
- an educational clinical scenario illustrating the correlation between pathologic and clinical data is presented

FOLLOW US on





HIPON project

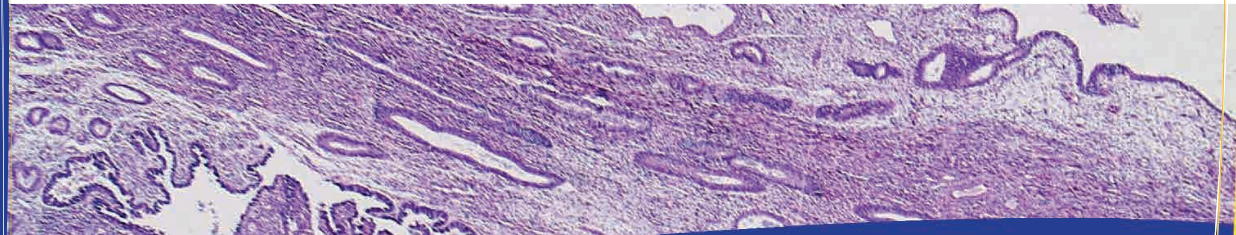
For the things we have to learn before we can do them, we learn by doing them”

Aristotle

HIPON web platform is based on **experiential** learning.

The 5 partner consortium is from Athens, Zagreb, Nijmegen, Nicosia and Skopje, sharing a total budget of 503.906€ for 36 months.

HIPON Project



5 partners from 5 countries collaborate for 36 months



ATHENS

National and Kapodistrian University of Athens, School of Medicine - First Department of Pathology

<http://www.school.med.uoa.gr>



ZAGREB

University of Zagreb School of Medicine, Institute of Pathology

<http://www.mef.hr>



NIJMEGEN

Radboud University Medical Centre, Pathology Department

<http://www.umcn.nl>



NICOSIA

Centre for the Advancement of Research and Development in Educational Technology

<http://www.cardet.org>



SKOPJE

Ss. Cyril and Methodius University, Faculty of Computer Science and Engineering

<http://www.ukim.edu.mk>

Project Coordinator

National and Kapodistrian University of Athens
School of Medicine - First Department of Pathology

Assoc.Prof. Dr. Andreas C. Lazaris
alazaris@med.uoa.gr



Lifelong Learning Programme

co-financed by the Lifelong Learning Program of the Education, Audiovisual and Culture Executive Agency
The Commission of the European Commission

www.hiponproject.eu

Like us on facebook • Follow us on twitter

a valuable online tool
on HistoPathology
for medical students
researchers
& professionals